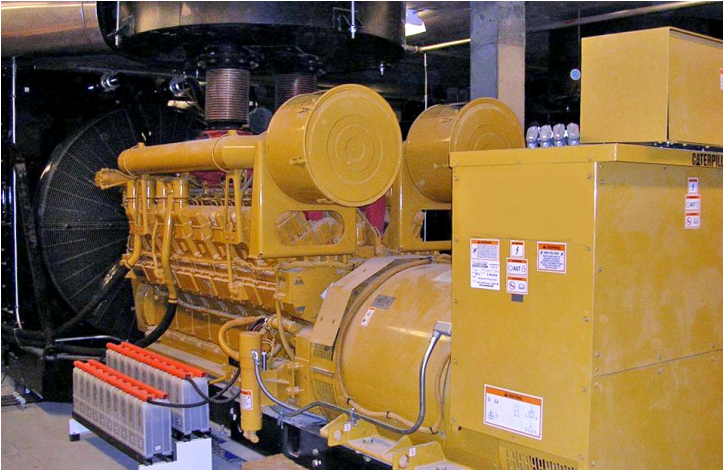


# Health Care Emergency Power



1540 Corporate Woods Pkwy  
Uniontown, OH 44685

330-526-2700  
sbmce.com

Scheeser Buckley Mayfield has over 60 years of experience designing emergency (essential) power systems for health care clients. Each project is unique based on the emergency power system requirements and needs, but every project must result in a reliable, stable, and maintainable emergency power system for the facility and its occupants. Whether the system is new or an upgrade of an existing system, SBM can assist with planning, design, and construction observation.

## ► Experience

We have designed hundreds of emergency power systems for a variety of health care facilities. Our portfolio includes:

- » Hospitals
- » Emergency Rooms
- » Pharmacies
- » Surgery Centers
- » Doctors' Offices
- » Central Utility Plants

## ► How to Begin

The design of emergency power systems starts with a thorough assessment of the facility's needs. For health care facilities, many of these needs are dictated by code. Determining the facility's existing systems, building functionality, and essential equipment is the first step in defining emergency power needs. Our evaluation includes answering questions such as:

- » What is the emergency power system currently available?
- » What equipment cannot have a power interruption?
- » What equipment needs to be on emergency power?
- » What branch of the emergency power system should the equipment be on?

The answers to these questions allow us to determine the design criteria. SBM takes the time to fully understand all aspects of the building emergency power system and requirements. For new buildings, renovations, additions, and existing power upgrades, we encourage client interaction to assure the design meets or exceeds their needs.

Because power demands of individual equipment can vary drastically, each piece of equipment needs to be evaluated to ensure the design will connect it to the correct emergency power system branch. This can also include uninterrupted power supplies when any loss of power is not acceptable.

## ► Custom Design

All projects have specialized needs and requirements. SBM designs custom systems based on what is learned during our assessment. We have solid experience in life safety, critical, and equipment branches of emergency power systems. Other types of emergency power may also be incorporated, such as uninterrupted power supplies (UPS systems).

Health care emergency power systems can be as simple as a temporary generator connection with a manual transfer switch for a general practice office. They can also be highly complex for a hospital which requires a paralleling of multiple generators with load sharing capabilities, automatic transfer control, system BAS integration, and uninterrupted power supplies. SBM is equally skilled at designing systems for both of these situations, and everything in between.

## ► Next Steps

Chances are, SBM has experience in designing emergency power systems similar to what your health care organization needs. Contact us to discuss how we may assist you. We will be happy to help determine what your options may be. Together, we will form a partnership to ensure your emergency power system is ready when needed.

Business Development: James Elsfielder | 330-526-2717 | [jelsfielder@sbmce.com](mailto:jelsfielder@sbmce.com)